

156

Copied

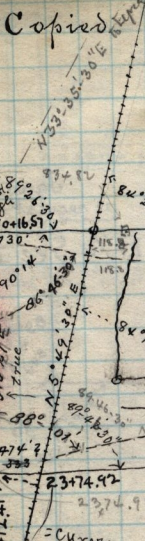
from notes of W. A. Sudd. Asst Eng  
afterwards checked by self.  
S.W. 1/4 32 T6N R1W

W.P.R.

A  
50+16.57  
B 54+91.28

SW cor  
Sec. 32  
S.E. 31  
NW 5  
NE. 6

2640.9 Ft.



81+47.89  
81+65.2

cottonwood stake.  
Obs. PK.

measured Dec 10-1888  
39.94  
N88°28'E  
2642  
2633.2

Fence  
Co. Road  
1/4 line  
center Sec. 5.  
measured

T5N R1W

89°30'  
71°32'  
W.P.R.  
5262  
105  
105  
105  
"C" 1+66.98  
B-55+35.85  
Sec. Cor.

N83°15'E  
Obs. PK.

S89°48'E 2646.9 Ft to Co. Rd  
true

March 28-1891 Run N. on 1/4 line Sec 5  
S.W. cor Sec 5 - 45615 center W.P. beam N13°27'E 545.  
Race line N13°27'E 680 to S. bank Race W. 776. Race to N. bank S. 4. Race  
780. 20 ft above headgate. 1294 = S. bank Race N. 1318 N. bank 1531  
S. bank Race W 1556. N. bank cur. W. 8  
7 2053. R. Bank Side  
T5N R1W

7 2053. R. Bank Side  
N. on line bet 5-6 - 692 ch to center  
230 ch to center Mill Race, runs N.E. 21.0° ch Mill Race S. to  
to S. bank. 2342 center Race beam N.W. 31.53 to Birch, S. fence